



PRESSURE COOKER CATALOG 2023

HAWKINS CLASSIC

New



21
MODELS

3
MODELS

6
MODELS

HAWKINS INSTAA

HAWKINS HEVIBASE

HAWKINS STAINLESS STEEL

STAINLESS STEEL HAWKINS CONTURA



9
MODELS

5
MODELS

HAWKINS TRI-PLY STAINLESS STEEL

New



1
MODEL

FUTURA STAINLESS STEEL

FUTURA HARD ANODISED



2
MODELS

13
MODELS

HAWKINS CERAMIC NONSTICK

New



2
MODELS

MISS MARY

MISS MARY HANDI



10
MODELS

3
MODELS

HAWKINS CONTURA

HAWKINS CONTURA BLACK



7
MODELS

7
MODELS

HAWKINS BIGBOY



3
MODELS

CERAMIC-COATED HAWKINS CONTURA

HAWKINS CONTURA BLACK XT



6
MODELS

5
MODELS

ACCESSORIES

New







THE MAKING OF HAWKINS PRESSURE COOKERS

Hawkins Cookers Limited has been in business since 1959. Today, it has two offices, three factories and about 600 persons working. It is the leader in the pressure cooker market in India and has exported its products since 1974 to various countries in each of the six continents of the world.

Worldwide, Hawkins has sold over 110 million units of pressure cookers and cookware by producing products of good design, good quality and considerable consumer benefit. Hawkins pressure cookers are listed by Underwriters Laboratories, USA, an independent worldwide institution testing products for public safety. CE certification also available.

Each pressure cooker made by Hawkins features an inside-fitting lid. This design is inherently safer than conventional pressure cookers. To open any Hawkins cooker, you have to first lower the lid slightly into the body of the cooker; and that cannot be done until the steam pressure inside the cooker falls to a safe level. Thus Hawkins pressure cookers are pressure-locked for safety - like a jetliner door!

The Hawkins Company is well known for not compromising on quality and for continual product innovation. The most thorough research and development, the most careful selection of materials, the best manufacturing practices and the strictest quality control - all go into making pressure cookers which are trusted by the millions of families using them.

Each cooker is tested to be leak-proof. Along with a superior pressure regulating system, this ensures that Hawkins cooks quickest. Each pressure cooker comes individually packed in an attractive full-colour carton. Cookbooks/Instruction Manuals come free with each pressure cooker.

Additionally, the individual cartons are packed in master cartons/case packs from 2 to 12 units (depending upon the size of the product). This makes your receiving of shipments more convenient and secure.

All Hawkins pressure cookers are guaranteed for five years.

CONTENTS

| | |
|---|----|
| Hawkins Classic Pressure Cooker..... | 3 |
| Hawkins Induction Compatible Classic Pressure Cooker..... | 5 |
| Hawkins Instaa Pressure Cooker | 7 |
| Hawkins Hevibase Pressure Cooker | 9 |
| Hawkins Ceramic Nonstick Pressure Cooker..... | 11 |
| Hawkins Contura Pressure Cooker..... | 13 |
| Hawkins Contura Black Pressure Cooker | 15 |
| Ceramic-Coated Hawkins Contura Pressure Cooker..... | 17 |
| Hawkins Contura Black XT Pressure Cooker | 19 |
| Hawkins Tri-Ply Stainless Steel Pressure Cooker..... | 21 |
| Stainless Steel Hawkins Contura Pressure Cooker..... | 23 |
| Hawkins Stainless Steel Pressure Cooker..... | 25 |
| Futura Pressure Cooker..... | 27 |
| Futura Stainless Steel Pressure Cooker..... | 29 |
| Miss Mary Pressure Cooker | 31 |
| Miss Mary Handi | 33 |
| Hawkins Bigboy Pressure Cooker..... | 35 |
| Hawkins Classic With Separators | 37 |
| Hawkins Two-dish Set and Three-dish Set | 38 |
| Hawkins Idli Stand, Miniature Cooker and Grid | 39 |
| Hawkins Repair Kit | 40 |
| Hawkins Genuine Parts | 41 |

Hawkins[®]

CLASSIC



5 LITRE WIDE
CODE: CL50



HAWKINS CLASSIC PRESSURE COOKER

The Classic is Hawkins' largest-selling, most popular range of pressure cookers – perhaps because of its attractive combination of features, benefits and price. Each Hawkins Classic features an inside-fitting lid. This design is inherently safer than conventional cookers. Thus Hawkins Classic pressure cookers are pressure-locked for safety – like a jetliner door!

This range was the first to be introduced by Hawkins and has been kept fresh and current by numerous innovations and improvements over the years. The latest improvement is a superior pressure regulating system that controls pressure to a narrower, more efficient range, reduces sprouting of frothy foods (such as *dal*) and is easier to insert and remove.

The safety valve is located under the lid handle bar so that when it operates the steam is safely deflected downwards. The gasket has minimum exposure to steam inside the cooker, does not rub every time the product is opened and closed – so lasts longer.

Stay-cool handles. Fixed sturdy pivot does not put pressure on the plastic handles as it is a part of the metal handle itself. Thus handles last longer. Recommended for use on gas stoves.

CODE
CL15



1.5 LITRE

IDEAL FOR
1 OR 2 PERSONS

CODE
CL20



2 LITRE

IDEAL FOR
2 OR 3 PERSONS

CODE
CL3W



3 LITRE WIDE

IDEAL FOR
3 OR 4 PERSONS

CODE
CL3T



3 LITRE TALL

IDEAL FOR
3 OR 4 PERSONS

CODE
CL35



3.5 LITRE

IDEAL FOR
4 TO 5 PERSONS

CODE
CL40



4 LITRE

IDEAL FOR
4 TO 6 PERSONS

CODE
CL50



5 LITRE

IDEAL FOR
5 TO 7 PERSONS

CODE
CL65



6.5 LITRE

IDEAL FOR
7 TO 9 PERSONS

CODE
CL8T



8 LITRE
TALL

IDEAL FOR
8 TO 11 PERSONS

CODE
CL8W



8 LITRE
WIDE BODY

IDEAL FOR
8 TO 11 PERSONS

CODE
CL10



10 LITRE

IDEAL FOR
10 TO 14
PERSONS

CODE
CL12



12 LITRE

IDEAL FOR
12 TO 16
PERSONS

| PRODUCT CODE | CAPACITY (LITRE) | BASE FLAT DIAMETER (mm) | BASE THICKNESS (mm) | EAN CODE | CASE PACK |
|--------------|------------------|-------------------------|---------------------|---------------|-----------|
| CL15 | 1.5 | 130 | 3.25 | 8901165090849 | 12 |
| CL20 | 2 | 134 | 3.25 | 8901165000848 | 12 |
| CL3T | 3 (TALL) | 134 | 3.25 | 8901165001845 | 9 |
| CL3W | 3 (WIDE) | 152 | 3.25 | 8901165092843 | 9 |
| CL35 | 3.5 | 164 | 3.25 | 8901165091846 | 6 |
| CL40 | 4 | 164 | 3.25 | 8901165003849 | 6 |
| CL50 | 5 | 164 | 3.25 | 8901165004846 | 6 |
| CL65 | 6.5 | 164 | 3.25 | 8901165005843 | 6 |
| CL8T | 8 (TALL) | 164 | 3.25 | 8901165006840 | 4 |
| CL8W | 8 (WIDE BODY) | 208 | 3.25 | 8901165007847 | 4 |
| CL10 | 10 | 208 | 4.06 | 8901165008844 | 4 |
| CL12 | 12 | 208 | 4.06 | 8901165009841 | 2 |

Hawkins

CLASSIC



4 LITRE
CODE: ICL40

The largest selling range of Hawkins Pressure Cookers, the Hawkins Classic, is now offered in a variety of models that are suitable for both gas and induction cooktops.



Classic 1.5, 2, 3, 4 & 5 Litre
now available
with Induction Base!



The base thickness of this new range has been suitably modified to work well on gas, induction, electric, ceramic, halogen cooktops also.

**CODE
ICL15**

1.5 LITRE



**INDUCTION
COMPATIBLE**

**IDEAL FOR
1 OR 2 PERSONS**

**CODE
ICL2T**

**2 LITRE
TALL**



**INDUCTION
COMPATIBLE**

**IDEAL FOR
2 OR 3 PERSONS**

**CODE
ICL3T**

**3 LITRE
TALL**



**INDUCTION
COMPATIBLE**

**IDEAL FOR
3 OR 4 PERSONS**

**CODE
ICL3W**

**3 LITRE
WIDE**



**INDUCTION
COMPATIBLE**

**IDEAL FOR
3 OR 4 PERSONS**

**CODE
ICL40**

4 LITRE

**INDUCTION
COMPATIBLE**



**IDEAL FOR
4 TO 6 PERSONS**

**CODE
ICL50**

5 LITRE

**INDUCTION
COMPATIBLE**



**IDEAL FOR
5 TO 7 PERSONS**

| PRODUCT CODE | CAPACITY (LITRE) | BASE FLAT DIAMETER (mm) | BASE THICKNESS (mm) | EAN CODE | CASE PACK |
|--------------|------------------|-------------------------|---------------------|---------------|-----------|
| ICL15 | 1.5 | 130 | 4.06 | 8901165099842 | 12 |
| ICL2T | 2 (TALL) | 130 | 4.06 | 8901165400846 | 9 |
| ICL3T | 3 (TALL) | 134 | 4.06 | 8901165096841 | 9 |
| ICL3W | 3 (WIDE) | 152 | 3.25 | 8901165093840 | 9 |
| ICL40 | 4 (TALL) | 152 | 4.06 | 8901165094847 | 6 |
| ICL50 | 5 | 164 | 4.06 | 8901165095844 | 6 |

New



3 LITRE
CODE: IIH3T



HAWKINS INSTAA PRESSURE COOKER

The Hawkins Instaa Pressure Cooker is hard anodised inside and out. The beautiful, durable black finish given by 60 microns thick hard anodised has several benefits. It is non-toxic, non staining and non-reactive with most foods, making it one of the most hygienic pressure cookers available. It makes the pressure cooker absorb heat faster, making it more energy-efficient. It does not pit or tarnish and stays looking new for years. It is not nonstick. Suitable for both gas & induction. The 4.06 mm extra thick induction base stays flat always and so that heats evenly, food does not burn and stick. The smooth hard anodised finish of the inside cooking surface is ideal for light frying of masalas prior to pressure cooking. And cleaning is so easy too!

CODE
IIH15

1.5 LITRE



IDEAL FOR
1 OR 2 PERSONS

CODE
IIH3T

3 LITRE



IDEAL FOR
3 OR 4 PERSONS

CODE
IIH2T

2 LITRE

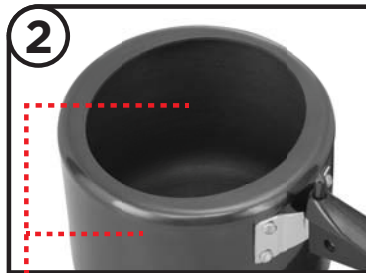


IDEAL FOR
2 OR 3 PERSONS

| PRODUCT CODE | CAPACITY (LITRE) | BASE FLAT DIAMETER (mm) | BASE THICKNESS (mm) | EAN CODE | CASE PACK |
|--------------|------------------|-------------------------|---------------------|---------------|-----------|
| IIH15 | 1.5 | 130 | 4.06 | 8901165401843 | 12 |
| IIH2T | 2 | 130 | 4.06 | 8901165402840 | 9 |
| IIH3T | 3 | 134 | 4.06 | 8901165093642 | 9 |



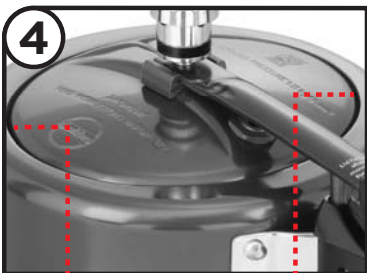
1 New Efficient Pressure Regulator — Cooks faster, Easy to insert & remove



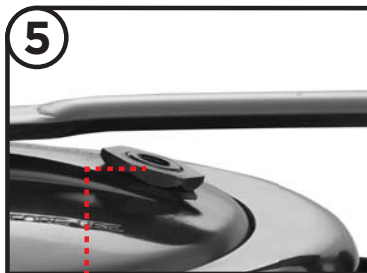
2 Hard Anodised inside and out — Non-toxic, hygienic cooking surface, does not pit or tarnish, stays looking new for years.



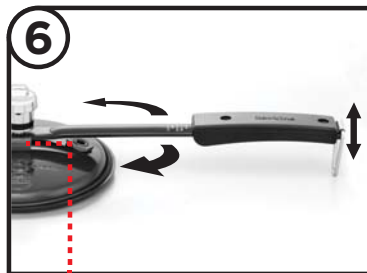
3 Heavy gauge, Extra-thick Induction Base — heats quickly and evenly, food will not burn or stick, stays flat on Gas + Induction



4 Inside-Fitting Safety Lid — will not open till pressure inside drops to a safe level



5 Shielded Safety Valve — Safely deflects steam downwards when it operates



6 'Play' or Movement designed in the Lid Handle for perfect sealing & leak-free pressure cooking



7 Food-grade Gasket — Lasts longer, does not rub each time the lid is opened or closed



5 LITRE
CODE: IH50



INDUCTION COMPATIBLE HAWKINS HEVIBASE PRESSURE COOKER

A double-thick 6.35 mm base, which is hard anodised and an Induction Compatible disc attached under high pressure to ensure a base that is permanent and heats quickly and evenly. The double-thick, heavy gauge base is ideal for light frying before pressure cooking. The base stays flat, never bulges. Plus, all the features of the Hawkins Classic Pressure Cooker.

Suitable for gas, induction, electric, ceramic and halogen cooktops.

CODE
IH20



2 LITRE

IDEAL FOR
2 OR 3 PERSONS

CODE
IH30



3 LITRE

IDEAL FOR
3 OR 4 PERSONS

CODE
IH35



3.5 LITRE

IDEAL FOR
4 OR 5 PERSONS

CODE
IH50



5 LITRE

IDEAL FOR
5 TO 7 PERSONS

CODE
IH65



6.5 LITRE

IDEAL FOR
7 TO 9 PERSONS

CODE
IH80



8 LITRE
WIDE BODY

IDEAL FOR
8 TO 11 PERSONS

| PRODUCT CODE | CAPACITY (LITRE) | BASE FLAT DIAMETER (mm) | BASE THICKNESS (mm) | EAN CODE | CASE PACK |
|--------------|------------------|-------------------------|---------------------|---------------|-----------|
| IH20 | 2 | 144 | 6.35 | 8901165631820 | 9 |
| IH30 | 3 | 144 | 6.35 | 8901165632827 | 6 |
| IH35 | 3.5 | 164 | 6.35 | 8901165634821 | 6 |
| IH50 | 5 | 164 | 6.35 | 8901165630823 | 6 |
| IH65 | 6.5 | 164 | 6.35 | 8901165633824 | 4 |
| IH80 | 8 (WIDE BODY) | 200 | 6.35 | 8901165635828 | 4 |

Abridged Recipe for Vegetable *Biryani* (Rice Layered with Spicy Vegetables)

For 5 Litre Model: Serves 7

Pressure
Cooking
Time:
3 minutes

1. Grind ginger, garlic, chillies into a paste with water.
2. Boil 5 cups water in cooker. Add salt, spices and rice. Boil 5 minutes without vent weight. Remove cooker from heat. Transfer rice to a colander and drain.
3. Heat one-fourth cup ghee in cooker 2 minutes. Add onions, ginger paste, cut potatoes and cauliflower. Fry 3 minutes. Add cut beans, carrots and peas. Fry 2 minutes. Add red chilli, cumin and *garam masala* powders, tomatoes, coriander and mint leaves, lemon juice and salt. Fry 3 minutes. Add *paneer*. Mix gently. Add 1 cup water. Stir.
4. Remove cooker from heat. Place rice on vegetables. Dribble saffron-milk over rice. Add hot ghee and cumin seeds.
5. Close cooker. Bring to pressure and cook 3 minutes. Remove cooker from heat. Allow to cool naturally. Release pressure. Open cooker.
6. Garnish with almonds and mint leaves. Serve hot with butter or curd.





ceramic
nonstick



New



2 LITRE
CODE: ICC20



**HAWKINS CERAMIC NONSTICK
PRESSURE COOKER**

Introducing the Revolutionary New Hawkins Ceramic Nonstick Pressure Cooker series: healthy but tasty – the best of both worlds! The specially formulated ceramic nonstick cooking surface has many wonderful properties for cooking. The German high quality ceramic has excellent release properties and can use up to 36% less oil during cooking. Now cook and stir fry masalas in the base of the cooker with no sticking and burning. The durable nonstick is not spoiled by high heat, which allows you to cook crisper, tastier food quicker. The healthy nonstick is most hygienic – No PFAS, No PFOA, No PTFE, No Heavy Metals. The attractive ceramic spatter finish on the exterior surface is scratch and stain resistant and stays looking new for years. And clean-up is so easy too!

The extra-thick, induction-compatible bottom allows the pressure cooker to work well on gas, induction, electric, ceramic and halogen cooktops. The stainless steel lid maintains the highest levels of quality and hygiene. Recommended for hand washing only.

This revolutionary new nonstick is so durable, it is backed by an unmatched five-year guarantee, a first in India.



CODE
ICC20

2 LITRE

WORKS ON GAS +
INDUCTION
+ELECTRIC+CERAMIC+HALOGEN



IDEAL FOR
2 OR 3 PERSONS

CODE
ICC30

3 LITRE

WORKS ON GAS +
INDUCTION
+ELECTRIC+CERAMIC+HALOGEN



IDEAL FOR
3 OR 4 PERSONS

| PRODUCT CODE | CAPACITY (LITRE) | BASE FLAT DIAMETER (mm) | BASE THICKNESS (mm) | EAN CODE | CASE PACK |
|--------------|------------------|-------------------------|---------------------|---------------|-----------|
| ICC20 | 2 | 134 | 3.25 | 8901165652641 | 9 |
| ICC30 | 3 | 130 | 3.25 | 8901165650647 | 6 |



Use of a wooden spatula is recommended, a metal spatula or any sharp object may cause nicks, cuts or chipping. The ceramic coating may stain, fade, scratch, or chip; this is fair wear and tear and is not covered under guarantee. This will not affect the functioning of the pressure cooker.

Hawkins Contura



3 LITRE
CODE: HC30



HAWKINS CONTURA PRESSURE COOKER

The Contura has all the features and benefits of the Classic plus a unique body with rounded sides for easier stirring, better visibility and easy removal of food. For difficult dishes which require a lot of stirring, the Contura is the ideal cooker. Stay-cool handles. Recommended for use on gas stoves.

CODE
HC15

1.5 LITRE



IDEAL FOR
1 OR 2 PERSONS

CODE
HC40

4 LITRE



IDEAL FOR
4 TO 6 PERSONS

CODE
HC20

2 LITRE



IDEAL FOR
2 OR 3 PERSONS

CODE
HC50

5 LITRE



IDEAL FOR
5 TO 7 PERSONS

CODE
HC30

3 LITRE



IDEAL FOR
3 OR 4 PERSONS

CODE
HC65

6.5 LITRE



IDEAL FOR
7 TO 9 PERSONS

CODE
HC35

3.5 LITRE



IDEAL FOR
4 OR 5 PERSONS

| PRODUCT CODE | CAPACITY (LITRE) | BASE FLAT DIAMETER (mm) | BASE THICKNESS (mm) | EAN CODE | CASE PACK |
|--------------|------------------|-------------------------|---------------------|---------------|-----------|
| HC15 | 1.5 | 130 | 3.25 | 8901165625843 | 12 |
| HC20 | 2 | 134 | 3.25 | 8901165023847 | 9 |
| HC30 | 3 | 130 | 3.25 | 8901165620848 | 9 |
| HC35 | 3.5 | 150 | 3.25 | 8901165020846 | 8 |
| HC40 | 4 | 130 | 3.25 | 8901165623849 | 6 |
| HC50 | 5 | 150 | 3.25 | 8901165022840 | 6 |
| HC65 | 6.5 | 150 | 3.25 | 8901165621845 | 4 |

Hawkins

Contura

BLACK



5 LITRE
CODE: CB50



HAWKINS CONTURA BLACK PRESSURE COOKER

The Hawkins Contura Black models have all the features and benefits of the Hawkins Contura Pressure Cooker in a hard anodised body and stainless steel lid. The beautiful, durable black finish given by 60 microns thick hard anodising has two benefits. It makes the pressure cooker absorb heat faster making it more energy-efficient. And the pressure cooker stays looking new for years. Recommended for use on gas stoves.

CODE
CB15



1.5 LITRE

IDEAL FOR
1 OR 2 PERSONS

CODE
CB40



4 LITRE

IDEAL FOR
4 TO 6 PERSONS

CODE
CB20



2 LITRE

IDEAL FOR
2 OR 3 PERSONS

CODE
CB50



5 LITRE

IDEAL FOR
5 TO 7 PERSONS

CODE
CB30



3 LITRE

IDEAL FOR
3 OR 4 PERSONS

CODE
CB65



6.5 LITRE

IDEAL FOR
7 TO 9 PERSONS

CODE
CB35



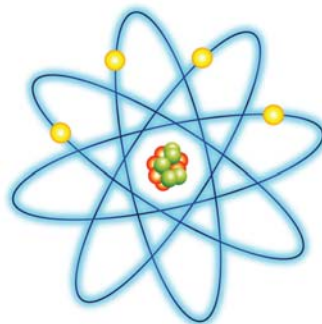
3.5 LITRE

IDEAL FOR
4 OR 5 PERSONS

| PRODUCT CODE | CAPACITY (LITRE) | BASE FLAT DIAMETER (mm) | BASE THICKNESS (mm) | EAN CODE | CASE PACK |
|--------------|------------------|-------------------------|---------------------|---------------|-----------|
| CB15 | 1.5 | 130 | 3.25 | 8901165624846 | 12 |
| CB20 | 2 | 134 | 3.25 | 8901165027845 | 9 |
| CB30 | 3 | 130 | 3.25 | 8901165028842 | 9 |
| CB35 | 3.5 | 150 | 3.25 | 8901165025841 | 8 |
| CB40 | 4 | 130 | 3.25 | 8901165622842 | 6 |
| CB50 | 5 | 150 | 3.25 | 8901165026848 | 6 |
| CB65 | 6.5 | 150 | 3.25 | 8901165029849 | 4 |

What is Hard Anodising?

Hard Anodising was first developed by Russian scientists to produce a metal surface tough enough for space travel. The same technology is now used to make the most advanced Pressure Cooker. Through a process of electrolysis at sub-zero temperature using a high intensity electric current, a 60 micron thick layer of aluminium oxide (Al_2O_3) is formed molecule by molecule as an integral part of pure, virgin aluminium. This process is called Hard Anodising. It produces a tough surface with wonderful properties for cooking.



- Thermal-efficient: heats fast and evenly
- Not spoilt by high heat
- 2.4 times harder than steel
- Non-toxic, non-staining, non-reactive with foods
- Will not pit, tarnish or corrode
- Stays looking new for years

CERAMIC-COATED
Hawkins
Contura
PRESSURE COOKER



3 LITRE
CODE: CTR30



**CERAMIC-COATED HAWKINS CONTURA
PRESSURE COOKER**

The Ceramic-Coated Hawkins Contura has all the features and benefits of the Hawkins Contura Pressure Cooker and has a non-toxic ceramic coating only on the exterior of the cooker body. The Ceramic-Coated body is scratch- and stain-resistant. The mouth of the cooker body is provided with a metallic rim for additional safety. It has a black base that heats quickly. Recommended for use on gas stoves.



CODE
CMY30

3 LITRE



IDEAL FOR
3 OR 4 PERSONS

CODE
CMY50

5 LITRE



IDEAL FOR
5 TO 7 PERSONS

CODE
CAG30

3 LITRE



IDEAL FOR
3 OR 4 PERSONS

CODE
CAG50

5 LITRE



IDEAL FOR
5 TO 7 PERSONS

CODE
CTR30

3 LITRE



IDEAL FOR
3 OR 4 PERSONS

CODE
CTR50

5 LITRE



IDEAL FOR
5 TO 7 PERSONS

| PRODUCT CODE | CERAMIC COLOUR | CAPACITY (LITRE) | BASE FLAT DIAMETER (mm) | BASE THICKNESS (mm) | EAN CODE | CASE PACK |
|--------------|----------------|------------------|-------------------------|---------------------|---------------|-----------|
| CMY30 | MUSTARD YELLOW | 3 | 130 | 3.25 | 8901165650142 | 9 |
| CAG30 | APPLE GREEN | 3 | 130 | 3.25 | 8901165650548 | 9 |
| CTR30 | TOMATO RED | 3 | 130 | 3.25 | 8901165650043 | 9 |
| CMY50 | MUSTARD YELLOW | 5 | 150 | 3.25 | 8901165651149 | 6 |
| CAG50 | APPLE GREEN | 5 | 150 | 3.25 | 8901165651545 | 6 |
| CTR50 | TOMATO RED | 5 | 150 | 3.25 | 8901165651040 | 6 |

Hawkins

Contura[®] XT

BLACK



5 LITRE
CODE: CXT50



INDUCTION COMPATIBLE HAWKINS CONTURA BLACK XT PRESSURE COOKER

The Induction Compatible Hawkins Contura Black XT Pressure Cooker has all the features and benefits of the Hawkins Contura Black Pressure Cooker. Additionally, permanently attached to the Xtra Thick base is a plate of AISI 430 grade magnetic stainless steel which makes the cooker Induction compatible. The 4.88 mm Xtra Thick base cooks quickly and evenly and retains heat well.

Suitable for gas, induction, electric, ceramic and halogen cooktops.

CODE
CXT15

1.5 LITRE



IDEAL FOR
1 OR 2 PERSONS

CODE
CXT20

2 LITRE



IDEAL FOR
2 OR 3 PERSONS

CODE
CXT30

3 LITRE



IDEAL FOR
3 OR 4 PERSONS

CODE
CXT35

3.5 LITRE



IDEAL FOR
4 OR 5 PERSONS

CODE
CXT50

5 LITRE



IDEAL FOR
5 OR 7 PERSONS



4.88 mm
Xtra Thick Base
is more Durable,
stays flat
on Gas + Induction

| PRODUCT CODE | CAPACITY (LITRE) | BASE FLAT DIAMETER (mm) | BASE THICKNESS (mm) | EAN CODE | CASE PACK |
|--------------|------------------|-------------------------|---------------------|---------------|-----------|
| CXT15 | 1.5 | 134 | 4.88 | 8901165464848 | 9 |
| CXT20 | 2 | 141 | 4.88 | 8901165662848 | 9 |
| CXT30 | 3 | 143 | 4.88 | 8901165661841 | 8 |
| CXT35 | 3.5 | 150 | 4.88 | 8901165663845 | 6 |
| CXT50 | 5 | 150 | 4.88 | 8901165660844 | 4 |



Tri-Ply Stainless Steel



HAWKINS SS TRI-PLY PRESSURE COOKER

The 3mm extra-thick tri-ply stainless steel body has several benefits: It spreads heat evenly through the base and up the side walls of the pressure cooker, cooking the food quickly and evenly from all sides. Lightly fry or deep fry and mix masalas without any sticking or burning. Cook healthy and hygienic dishes using less oil by virtue of the special tri-ply protection given to the 18/8, food-grade, superior stainless steel cooking surface. The outer surface of AISI 430 magnetic stainless steel makes the pressure cooker work well on gas, induction, electric, ceramic or halogen cooktops. The strong, extra-thick body ensures that the base stays flat and always in contact with the cooking surface.

The wider mouth and sloping walls makes it easier to stir and easier to see the food while cooking. It is more convenient as well to insert and remove containers for indirect cooking inside the pressure cooker body.



CODE
HSST35

3.5 LITRE



IDEAL FOR
4 OR 5 PERSONS

| PRODUCT CODE | CAPACITY (LITRE) | BASE FLAT DIAMETER (mm) | BASE THICKNESS (mm) | EAN CODE | CASE PACK |
|--------------|------------------|-------------------------|---------------------|---------------|-----------|
| HSST35 | 3.5 | 143 | 3 | 8901165600802 | 6 |

Hawkins 3 mm Extra-Thick Tri-Ply

1 Cooking Surface

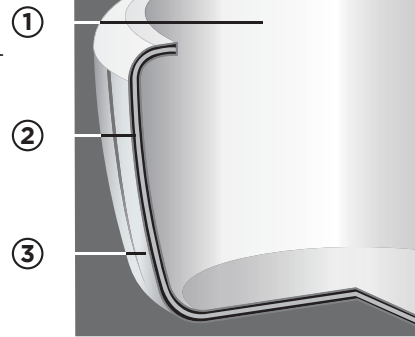
AISI 304 18/8 food-grade Stainless Steel — healthy and low-oil cooking

2 Core

Heavy Gauge Aluminium — spreads heat evenly

3 Base & Outer Surface

AISI 430 Magnetic Stainless Steel — Works on Gas and Induction



STAINLESS STEEL
Hawkins
Contura[®]



3 LITRE
CODE: SSC30



**INDUCTION COMPATIBLE
 STAINLESS STEEL HAWKINS CONTURA
 PRESSURE COOKER**

The Stainless Steel Hawkins Contura has all the features and benefits of the Hawkins Contura Pressure Cooker, with a body and lid made from superior grade AISI 304 non-magnetic stainless steel. The cooker has an external base of AISI 430 grade magnetic stainless steel which makes it Induction Compatible. It has a 6.6 mm thick sandwich bottom to ensure uniform heating and no hotspots. The base always stays flat and never bulges. The cooker body has curved sides for easy stirring. It stays bright, does not pit or corrode, is extremely hygienic and stays looking new for years. Suitable for use on all domestic gas, electric, halogen, ceramic and induction cooktops.

CODE
SSC15



1.5 LITRE

IDEAL FOR
1 OR 2
PERSONS

CODE
SSC35



3.5 LITRE

IDEAL FOR
4 OR 5
PERSONS

CODE
SSC20



2 LITRE

IDEAL FOR
2 OR 3
PERSONS

CODE
SSC50



5 LITRE

IDEAL FOR
5 TO 7
PERSONS

CODE
SSC30



3 LITRE

IDEAL FOR
3 OR 4
PERSONS

| PRODUCT CODE | CAPACITY (LITRE) | BASE FLAT DIAMETER (mm) | BASE THICKNESS (mm) | EAN CODE | CASE PACK |
|--------------|------------------|-------------------------|---------------------|---------------|-----------|
| SSC15 | 1.5 | 125 | 6.58 | 8901165673806 | 9 |
| SSC20 | 2 | 127 | 6.58 | 8901165671802 | 6 |
| SSC30 | 3 | 131 | 6.58 | 8901165670805 | 6 |
| SSC35 | 3.5 | 156 | 6.68 | 8901165674803 | 6 |
| SSC50 | 5 | 156 | 6.68 | 8901165672809 | 4 |



- Body and Lid 18Cr/8Ni
AISI 304 superior surgical grade
Non-magnetic stainless steel
- Induction Compatible Base
AISI 430 magnetic stainless steel

Recipe for Gajar ka Halwa (Carrot Pudding)

For 3 Litre Model: Serves 5

- carrots** 6 large (2 lb 7 oz / 1.1 kg)
peeled and grated
- milk#** ¼ cup / 60 ml
- sugar** 1 cup + 3 tbsp / 240 g
- mava/khoya*** 1½ cups + 1½ tbsp /
240 g crumbled
- ghee** ¼ cup / 50 g
- almonds** 12 blanched,
skins removed and sliced
- * whole dried milk

#When cooking on Induction use ½ cup or 120 ml water instead of milk

**Pressure
Cooking
Time:
0 minute**

1. Put carrots and milk in cooker.
2. Close cooker. Bring to full pressure on high heat. Remove cooker immediately from heat. Release pressure with slight lifting of vent weight. Open cooker.
3. Place open cooker with carrots and milk on high heat. Add sugar. Cook till liquid dries up (about 13 minutes), stirring occasionally. Add mava and ghee. Cook till ghee shows separately (about 8 minutes), stirring constantly. Serve hot, garnished with almonds.



Hawkins[®]

STAINLESS STEEL



5 LITRE
CODE: HSS50



INDUCTION COMPATIBLE HAWKINS STAINLESS STEEL PRESSURE COOKER

The body and lid are 100% stainless steel. To ensure uniform heating, the bottom has a core of 4.06 mm thick aluminium sandwiched between two sheets of stainless steel. The base always stays flat, never bulges.

Stainless steel stays bright, does not pit or corrode, is easy to clean and extremely hygienic. Can be used safely for light and deep frying and pressure cooking.

Suitable for gas, induction, electric, ceramic and halogen cooktops.

CODE
HSS15



1.5 LITRE

IDEAL FOR
1 OR 2 PERSONS

CODE
HSS20



2 LITRE

IDEAL FOR
2 OR 3 PERSONS

CODE
HSS3T



3 LITRE
TALL

IDEAL FOR
3 OR 4 PERSONS

CODE
HSS3W



3 LITRE

IDEAL FOR
3 OR 4 PERSONS

CODE
HSS40



4 LITRE

IDEAL FOR
4 TO 6
PERSONS

CODE
HSS50



5 LITRE

IDEAL FOR
5 TO 7
PERSONS

CODE
HSS60



6 LITRE

IDEAL FOR
6 TO 8 PERSONS

CODE
HSS80



8 LITRE

IDEAL FOR
8 TO 11 PERSONS

CODE
HSS10



10 LITRE

IDEAL FOR
10 TO 14 PERSONS

| PRODUCT CODE | CAPACITY (LITRE) | BASE FLAT DIAMETER (mm) | BASE THICKNESS (mm) | EAN CODE | CASE PACK |
|--------------|------------------|-------------------------|---------------------|---------------|-----------|
| HSS15 | 1.5 | 125 | 5.80 | 8901165049809 | 9 |
| HSS20 | 2 | 130 | 5.80 | 8901165045801 | 8 |
| HSS3T | 3 (TALL) | 130 | 5.80 | 8901165048802 | 6 |
| HSS3W | 3 | 158 | 5.80 | 8901165040806 | 6 |
| HSS40 | 4 | 158 | 5.80 | 8901165046808 | 4 |
| HSS50 | 5 | 158 | 5.80 | 8901165041803 | 4 |
| HSS60 | 6 | 158 | 5.80 | 8901165047805 | 4 |
| HSS80 | 8 | 196 | 7.00 | 8901165043807 | 4 |
| HSS10 | 10 | 196 | 7.00 | 8901165044804 | 2 |

Induction
Compatible
Base
AISI 430
magnetic
stainless
steel



Body and Lid
18Cr/8Ni AISI 304
surgical grade
non-magnetic
stainless steel



5 LITRE
CODE: IFP50



FUTURA PRESSURE COOKER

A beautiful combination of form and function, Futura is the only pressure cooker in the world to have been displayed by The Museum of Modern Art, New York.

Futura cooks on average 46% faster than a microwave oven.

The beautiful, durable black finish given by 60 microns thick hard anodising has two benefits. It makes the pressure cooker absorb heat faster making it more energy-efficient. And the pressure cooker stays looking new for years.

The unique pressure regulating system gives you the convenience of finger-tip pressure release and prevents clogging of the steam vent. The double-thick base stays flat, heats evenly and is ideal for light frying before pressure cooking.

Suitable for gas, electric, ceramic and halogen. Induction Compatible models available in 2 Litre, 3 Litre, 4 Litre, 5 Litre and 6 Litre.

CODE
FP20



CODE
IFP20



INDUCTION
COMPATIBLE

2 LITRE

IDEAL FOR
2 OR 3 PERSONS

CODE
FP30



CODE
IFP30



INDUCTION
COMPATIBLE

3 LITRE

IDEAL FOR
3 OR 4 PERSONS

CODE
FP40



CODE
IFP40



INDUCTION
COMPATIBLE

4 LITRE

IDEAL FOR
4 TO 6 PERSONS

CODE
FP50



CODE
IFP50



INDUCTION
COMPATIBLE

5 LITRE

IDEAL FOR
5 TO 7 PERSONS

CODE
FP60



CODE
IFP60



INDUCTION
COMPATIBLE

6 LITRE

IDEAL FOR
6 TO 8 PERSONS

CODE
FP7T



7 LITRE

IDEAL FOR
7 TO 10 PERSONS

CODE
FP7J



7 LITRE
JUMBO

IDEAL FOR
7 TO 10 PERSONS

CODE
FP90



9 LITRE

IDEAL FOR
9 TO 13 PERSONS

| PRODUCT CODE | CAPACITY (LITRE) | BASE FLAT DIAMETER (mm) | BASE THICKNESS (mm) | EAN CODE | CASE PACK |
|--------------|------------------|-------------------------|---------------------|---------------|-----------|
| FP20 | 2 | 134 | 6.35 | 8901165058535 | 6 |
| IFP20 | 2 | 134 | 6.35 | 8901165648538 | 8 |
| FP30 | 3 | 152 | 6.35 | 8901165050539 | 6 |
| IFP30 | 3 | 152 | 6.35 | 8901165640532 | 6 |
| FP40 | 4 | 179 | 6.35 | 8901165056531 | 4 |
| IFP40 | 4 | 179 | 6.35 | 8901165646534 | 4 |
| FP50 | 5 | 179 | 6.35 | 8901165052533 | 4 |
| IFP50 | 5 | 179 | 6.35 | 8901165642536 | 4 |
| FP60 | 6 | 179 | 6.35 | 8901165057538 | 4 |
| IFP60 | 6 | 179 | 6.35 | 8901165647531 | 4 |
| FP7T | 7 | 179 | 6.35 | 8901165053530 | 2 |
| FP7J | 7 (JUMBO) | 200 | 6.35 | 8901165054537 | 2 |
| FP90 | 9 | 200 | 6.35 | 8901165055534 | 2 |

STAINLESS STEEL
FUTURA®
PRESSURE COOKER



4 LITRE
 CODE: FSS40



**INDUCTION COMPATIBLE
 FUTURA PRESSURE COOKER
 IN STAINLESS STEEL**

The beautiful form and function of the Futura Pressure Cooker – executed in stainless steel. The 7 mm thick base contains a 4.9 mm thick aluminium disc sandwiched in stainless steel for efficient heat dispersion.

Suitable for gas, electric, ceramic, halogen and induction cooktops.

CODE
FSS40

4 LITRE



IDEAL FOR
4 TO 6 PERSONS

CODE
FSS55

5.5 LITRE



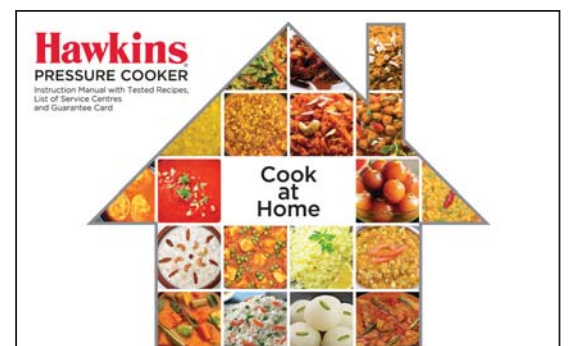
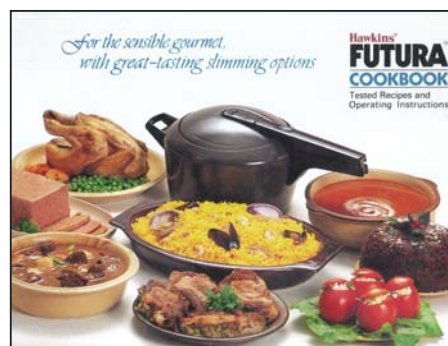
IDEAL FOR
6 OR 7 PERSONS

| PRODUCT CODE | CAPACITY (LITRE) | BASE FLAT DIAMETER (mm) | BASE THICKNESS (mm) | EAN CODE | CASE PACK |
|--------------|------------------|-------------------------|---------------------|---------------|-----------|
| FSS40 | 4 | 173 | 7.00 | 8901165063539 | 4 |
| FSS55 | 5.5 | 173 | 7.00 | 8901165062532 | 4 |

THE HAWKINS TEST KITCHEN

All Cookbooks and Instruction Manuals are written by the Hawkins Test Kitchen. The Test Kitchen writes instructions for the user, develops recipes and solves customer problems. Established in 1984, it has since then tested hundreds of

products before launch. If a prototype has some issues the Test Kitchen sends it back to the R&D Centre for improving the design. The Test Kitchen tests products from the consumer's point of view.



MISS MARY[®]

PRESSURE COOKER



5 LITRE
CODE: MM50



MISS MARY PRESSURE COOKER

Miss Mary is a well-made and reliable pressure cooker that will not leak. It will give trouble-free service and is totally safe. Miss Mary Pressure Cookers go through all the applicable rigorous checks and tests as are applied on other pressure cookers manufactured by Hawkins and are quality-certified by the Bureau of Indian Standards (popularly known as ISI). Recommended for use on gas stoves.

CODE
MM15



1.5 LITRE

IDEAL FOR
1 OR 2 PERSONS

CODE
MM50



5 LITRE

IDEAL FOR
5 TO 7 PERSONS

CODE
MM20



2 LITRE

IDEAL FOR
2 OR 3 PERSONS

CODE
MM60



6 LITRE

IDEAL FOR
6 TO 8 PERSONS

CODE
MM25



2.5 LITRE

IDEAL FOR
2 TO 4 PERSONS

CODE
MM70



7 LITRE

IDEAL FOR
7 TO 10 PERSONS

CODE
MM30



3 LITRE

IDEAL FOR
3 OR 4 PERSONS

CODE
MM85



8.5 LITRE

IDEAL FOR
8 TO 12 PERSONS

CODE
MM35



3.5 LITRE

IDEAL FOR
4 OR 5 PERSONS

CODE
MM40



4 LITRE

IDEAL FOR
4 TO 6 PERSONS

| PRODUCT CODE | CAPACITY (LITRE) | BASE FLAT DIAMETER (mm) | BASE THICKNESS (mm) | EAN CODE | CASE PACK |
|--------------|------------------|-------------------------|---------------------|---------------|-----------|
| MM15 | 1.5 | 130 | 3.25 | 8901165076805 | 12 |
| MM20 | 2 | 130 | 3.25 | 8901165412849 | 9 |
| MM25 | 2.5 | 134 | 3.25 | 8901165070803 | 12 |
| MM30 | 3 | 134 | 3.25 | 8901165077802 | 9 |
| MM35 | 3.5 | 134 | 3.25 | 8901165071800 | 6 |
| MM40 | 4 | 152 | 3.25 | 8901165411842 | 6 |
| MM50 | 5 | 164 | 3.25 | 8901165078809 | 6 |
| MM60 | 6 | 164 | 3.25 | 8901165410845 | 4 |
| MM70 | 7 | 164 | 3.25 | 8901165074801 | 4 |
| MM85 | 8.5 | 208 | 3.25 | 8901165075808 | 4 |

MISS MARY[®]

Handi



5 LITRE
CODE: MMH50



MISS MARY HANDI

Miss Mary Handi pressure cooker features a Curved Body for easy stirring, easy removal of food, better visibility of food. It is made of pure virgin, metal which is stronger and lasts longer. It has an improved Vent Weight (Whistle) which is more efficient, causes less dal sprouting, cooks faster and saves fuel. It also features an inside-fitting lid which will not open under pressure. A Shielded Safety Valve located under the lid handle bar, deflects steam and is more safe. It has sturdy and strong handles which are comfortable to hold. Each Miss Mary cooker is tested to be leak-proof.

CODE
MMH20

2 LITRE



IDEAL FOR
2 TO 3 PERSONS

CODE
MMH50

5 LITRE



IDEAL FOR
5 TO 7 PERSONS

CODE
MMH30

3 LITRE



IDEAL FOR
3 OR 4
PERSONS

| PRODUCT CODE | CAPACITY (LITRE) | BASE FLAT DIAMETER (mm) | BASE THICKNESS (mm) | EAN CODE | CASE PACK |
|--------------|------------------|-------------------------|---------------------|---------------|-----------|
| MMH20 | 2 | 141 | 3.25 | 8901165413846 | 9 |
| MMH30 | 3 | 143 | 3.25 | 8901165079844 | 9 |
| MMH50 | 5 | 150 | 3.25 | 8901165418841 | 6 |

Abridged Recipe for Masala Gobi (Spicy Cauliflower)

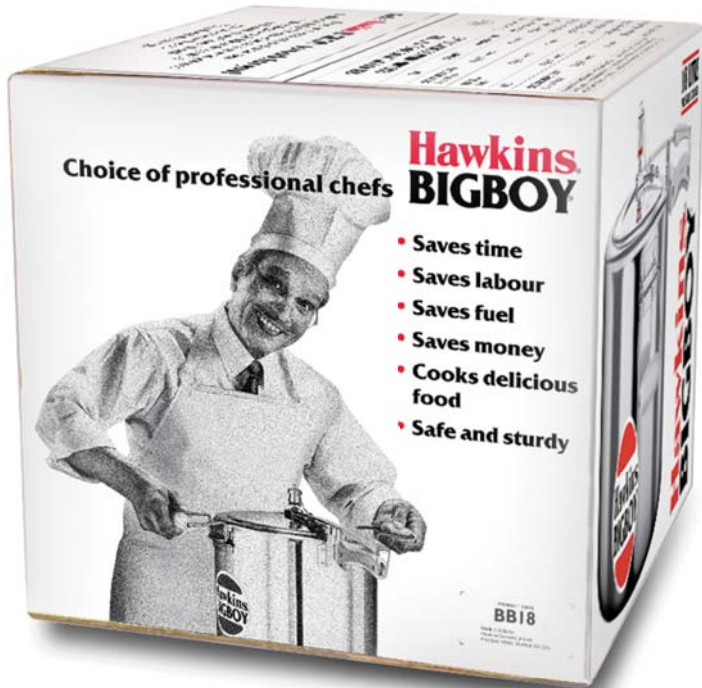
For 3 Litre Model : Serves 12

Pressure Cooking Time 2 minutes

6¾ cups / 1.6 litres **water**
 2 tbsp + ½ tsp / 32.5 ml **salt**
 2 medium heads (2½ lb / 1.2 kg) **cauliflower** cut into 1¼-1½ inch / 3-4 cm flowerettes with ½ inch / 1 cm stalks; cut remaining tender stalks into ½ inch / 1 cm cubes (720 g)
 1½ tbsp / 22.5 ml **poppy seeds**
 3 tbsp / 30 g **cashew nuts** broken into pieces
 1 x 1½ inch / 3.8 cm piece (½ oz / 15 g) **fresh ginger**
 9 small cloves **garlic**
 3 **green chillies**
 ¾ cup / 180 ml **vegetable oil**
 3 large (1 lb / 450 g) **onions** grated
 4 medium (13 oz / 375 g) **tomatoes** blanched, skins removed and chopped
 ¾ tsp / 3.8 ml **turmeric**
 1½ tsp / 7.5 ml **coriander powder**
 ¾ tsp / 3.8 ml **cumin powder**
 1½ tsp / 7.5 ml **red chilli powder**
 ¾ cup / 180 ml **curd** beaten
 1½ tbsp / 22.5 ml **coriander leaves** chopped

1. In a bowl, add 5¾ cups/1.4 litres water with 1 tbsp /15 ml salt. Put cauliflower in bowl and keep about 30 minutes. Drain.
2. Grind together poppy seeds and cashew nuts into a paste, gradually adding ¼ cup /60 ml water time to time.
3. Separately grind together ginger, garlic and green chillies into a paste.
4. Heat oil in cooker about 2 minutes. Add onions and fry till golden brown.
5. Add ginger paste, tomatoes, turmeric, coriander, cumin and red chilli powders and remaining salt (1 tbsp +½ tsp /18 ml). Cook till tomatoes are pulpy, stirring occasionally.
6. Add 1 tbsp/15 ml curd. Stir and fry until curd is well blended (about ½ minute). Add remaining curd in the same way, a tablespoon at a time, till all curd is used. Stir and fry till oil shows separately (about 3 minutes).
7. Add cauliflower. Stir fry about 5 minutes. Add remaining water (¾ cup/180 ml). Mix.
8. Close cooker. Bring to full pressure on high heat. Reduce heat and cook 2 minutes.
9. Remove cooker from heat. Release pressure with slight lifting of vent weight.
10. Open cooker. Add cashew nut paste. Return cooker to medium heat. Cook about 2 minutes, stirring gently. Serve hot, garnished with coriander leaves.

Hawkins® BIGBOY™



HAWKINS BIGBOY PRESSURE COOKER

The Bigboy range has been specially designed to cook large quantities of food quickly and economically. It is most useful in restaurants, hotels, canteens in factories, hospitals, schools and colleges. Also, canteens in many civil or military government establishments are using the Hawkins Bigboy.

The 18 Litre and 22 Litre Bigboy Pressure Cookers have a pair of sturdy lifting handles attached to the sides of the pressure cooker for convenience in handling the heavy weight carried by such pressure cookers. The plastic handles of all Bigboy Pressure Cookers are made from reinforced fibreglass for extra strength. Similarly, all other components of Bigboy Pressure Cookers are made for heavy duty. A chain is attached to the vent weight to prevent loss in busy kitchens.

Recommended for use on gas or kerosene stoves. They may also be used on coal burning or firewood stoves provided a suitable gap of at least 1 inch is kept between the fuel and the bottom of the cooker.



18 LITRE
CODE: BB18

CODE
BB14

14 LITRE



IDEAL FOR
14 TO 18
PERSONS

CODE
BB18

18 LITRE



IDEAL FOR
18 TO 24
PERSONS

CODE
BB22

22 LITRE



IDEAL FOR
22 TO 30
PERSONS

**COOK LARGE QUANTITIES
OF HEALTHY, TASTY FOOD
QUICKLY AND ECONOMICALLY**

| ITEM | QUANTITY IN 22 LITRE | COOKING TIME |
|--|-------------------------|-----------------|
| RICE | 16 kgs/35.3 pounds | 29 minutes |
| RED GRAM (<i>Tur Dal</i>) | 15 kgs/33.1 pounds | 29 minutes |
| SPICED CHICKPEAS CURRY (<i>Channa Masala</i>) | 13 kgs/28.7 pounds | 48 minutes |
| SPICED MUTTON CURRY (<i>Mutton Masala</i>) | 16 kgs/35.3 pounds | 39 minutes |

| PRODUCT CODE | CAPACITY (LITRE) | BASE FLAT DIAMETER (mm) | BASE THICKNESS (mm) | EAN CODE | CASE PACK |
|-----------------|---------------------|-------------------------------|---------------------------|---------------|--------------|
| BB14 | 14 | 208 | 4.06 | 8901165030807 | 3 |
| BB18 | 18 | 245 | 4.88 | 8901165032801 | 2 |
| BB22 | 22 | 245 | 4.88 | 8901165031804 | 2 |



Hawkins

CLASSIC

WITH SEPARATORS



**5 LITRE
WITH SEPARATORS
CODE: CL51**

HAWKINS CLASSIC PRESSURE COOKER WITH SEPARATORS

Make a quick-n-easy, delicious, healthful meal using the Hawkins Separator Set, that can cook 2 or 3 dishes at the same time in your Hawkins pressure cooker. Cook healthier, low-oil foods in pure steam. Save more time, more fuel. Plus, clean-up is much easier! Separator Sets have 2 or 3 food containers and a stand for convenient insertion and removal of the stack of containers. The versatile containers can also be used for steaming foods that are to be kept out of water, and for reheating foods conveniently.

Separator Sets are made of pure, virgin aluminium, and are presently offered packed inside 3 Hawkins Classic Pressure Cooker models: 5 Litre (with 2 containers) and 6.5 Litre & 10 Litre pressure cookers (with 3 containers). All 3 sizes are also offered without Separator Sets (see page 4).



6.5 LITRE

WITH SEPARATORS



**CODE
CL66**

10 LITRE

WITH SEPARATORS



**CODE
CL11**

| PRODUCT CODE | CAPACITY (LITRE) | BASE FLAT DIAMETER (mm) | BASE THICKNESS (mm) | EAN CODE | CASE PACK | IDEAL FOR |
|--------------|------------------|-------------------------|---------------------|---------------|-----------|-------------|
| CL51 | 5 | 164 | 3.25 | 8901165004945 | 6 | 2-3 Persons |
| CL66 | 6.5 | 164 | 3.25 | 8901165005942 | 6 | 3-4 Persons |
| CL11 | 10 | 208 | 4.06 | 8901165008943 | 3 | 4-6 Persons |

Hawkins®

TWO-DISH SET THREE-DISH SET

TWO DISH SET
CODE: SDS3



TWO-DISH SET & THREE-DISH SET

Make a quick-n-easy, delicious, healthful meal using these Sets in your Hawkins pressure cooker, that can cook 2 or 3 dishes at the same time. Cook healthier, low-oil foods in pure steam. Save more time, more fuel. Plus, clean-up is much easier! These Sets have 2 or 3 hard anodised as well as 2 stainless steel food containers for healthy and hygienic cooking, and a stand for convenient insertion and removal of the stack of containers. The versatile containers can also be used for steaming foods that are to be kept out of water, and for reheating foods conveniently.

The Hard Anodised Two-Dish Set is suitable for use in many of our pressure cooker models between 4 and 6 Litre, and the Three-Dish Set for many of our pressure cooker models between 6.5 and 12 Litre.

The Stainless Steel Two-Dish Set is suitable for use in our pressure cooker models between 3 Litre Tall Classic & 4 Litre Contura

TWO-DISH SET CODE ADS5



THREE-DISH SET CODE ADS65



TWO-DISH SET **New** CODE SDS3



| PRODUCT CODE | NUMBER OF CONTAINERS | CAPACITY OF CONTAINERS (in ml) | EAN CODE | CASE PACK |
|------------------------|----------------------|--------------------------------|---------------|-----------|
| ADS5 | 2 | 880 | 8901165925103 | 12 |
| ADS65 | 3 | 880, 1300 | 8901165925110 | 12 |
| STAINLESS STEEL | | | | |
| SDS3 | 2 | 500, 775 | 8901165924052 | 12 |

Hawkins® IDLI STAND

HAWKINS IDLI STANDS

Make *idlis* easily and quickly at home, even if you've never made them before, with the Hawkins Idli Stand. Choose from 4 models for making 12 or 18 delicious, fluffy *idlis* at a time – in 6 minutes! Each Hawkins Idli Stand is securely packed in its own full-colour box, with full instructions on how to make *idli*, *chutney* and *sambar*.



NEW!
STAINLESS STEEL
IDLI STAND

CAPACITY:
12 IDLIS
CODE: SSID5

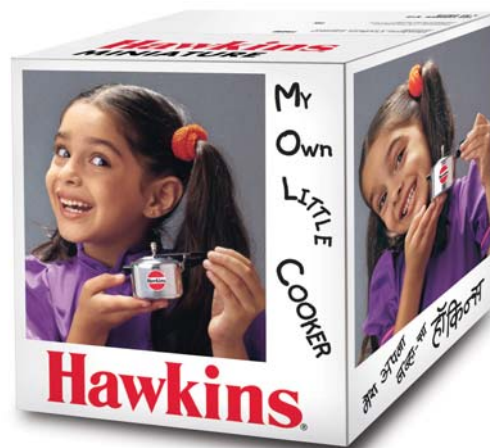


| PRODUCT CODE | CAPACITY | DESIGNED FOR | EAN CODE | CASE PACK |
|--------------|----------|--------------|---------------|-----------|
| ID12S | 12 Idlis | 3 Litre Tall | 8901165913001 | 48 |
| ID12L | 12 Idlis | 5 Litre | 8901165910000 | 36 |
| SSID5 | 12 Idlis | 5 Litre | 8901165914008 | 18 |
| ID18L | 18 Idlis | 6.5 Litre | 8901165911007 | 24 |

Hawkins® MINIATURE

HAWKINS MINIATURE COOKER

A faithful, non-working miniature reproduction of the 5 Litre Hawkins Classic Pressure Cooker – the body diameter is just 5.4 cm! The Hawkins Miniature Cooker comes individually packed in a scaled-down version of the Hawkins 5 Litre unit carton. 32 individually packed units are contained in an attractive full-colour display carton for effective display.



| PRODUCT CODE | EAN CODE | CASE PACK |
|--------------|---------------|-----------|
| MIN | 8901165930008 | 32 |

Hawkins® G:RID PRESSURE COOKER

New



HAWKINS PRESSURE COOKER GRID

Use the versatile Hawkins Grid to;

- Steam food above the water (rather than immersed in liquid with flavours blending)
 - Minimise contact between food and the cooking liquid and/or the base
 - Steam foods in containers or cups
 - As a coaster or heat pad for the hot cooker body
- Grids are available in 11cm and 17cm diameter, suitable for Hawkins pressure cookers of mouth diameter 12cm and 18cm or more respectively.

| PRODUCT CODE | DIAMETER (cm) | EAN CODE | CASE PACK |
|------------------------|---------------|---------------|-----------|
| ALUMINIUM | | | |
| GRID11AL | 11 | 8901165920160 | 5 |
| GRID17AL | 17 | 8901165920177 | 5 |
| STAINLESS STEEL | | | |
| GRID11SS | 11 | 8901165920184 | 5 |
| GRID17SS | 17 | 8901165920191 | 5 |

Hawkins®

REPAIR KIT



Hawkins®

Repair Kit

FOR PRESSURE COOKERS:*



| THIS PACK CONTAINS: | CODE | NET QTY. |
|--|-------|----------|
| • BODY HANDLE WITH STUD AND SCREW (Version 2013) | B13 | 1 U |
| • SUBSIDIARY BODY HANDLE WITH SCREW (Version 2013) | SBH05 | 1 U |
| • HAWKINS PRESSURE COOKER GASKET | SG | 1 U |
| • HAWKINS SAFETY VALVE | SV | 1 U |
| • HAWKINS SPANNER | SP19 | 1 U |

PRODUCT CODE
KIT5L



MANUFACTURED BY
HAWKINS COOKERS LTD., MAKER TOWER F 101
CUFFE PARADE, MUMBAI 400 005
MAHARASHTRA, INDIA

DO NOT BUY IF PACK IS
TAMPURED OR OPEN.

CONSUMERS: ANY QUESTIONS OR COMMENTS? CONTACT:
HAWKINS SERVICE DEPARTMENT
UDYOG MANDIR 2, MAHIM, MUMBAI 400 016, MAHARASHTRA
TEL: (022) 24 440 807, conserve@hawkinscookers.com
www.hawkinscookers.com

5 Reasons to buy the Hawkins Repair Kit



Repair your pressure cooker yourself with just a screwdriver. Other parts and tools are in this pack.



Uninterrupted Meals. Your pressure cooker can be repaired and back to work in 5 minutes.



Guarantee of genuine parts. No risk of spurious parts when you buy parts later.



No charge for repair and avoid untrained or unscrupulous mechanics.



Take the kit abroad or to a town where there is no Hawkins Authorised Service Centre.

INSIDE: Repair instructions with illustrations to help you repair your cooker yourself.

THE HAWKINS REPAIR KIT

Now you can do some repairs of your pressure cooker yourself and get back to cooking in just five minutes! All you need is a screwdriver – the other parts and tools are all there in the Hawkins Repair Kit. No more risk of using spurious parts, incurring unnecessary repair costs or dealing with untrained, unscrupulous mechanics. This kit is ideally suited to be used abroad, or in towns where there is no Hawkins Authorised Service Centre nearby.

| PRODUCT CODE | EAN CODE | CASE PACK |
|--------------|---------------|-----------|
| KIT5L | 8901165941011 | 10 |

Main Parts of the Hawkins Pressure Cooker



HAWKINS GENUINE SPARE PARTS

Hawkins has developed a complete range of genuine spare parts that may be required through the life of any Hawkins model across the entire range of our pressure cookers.

Simple replacement of parts like gasket, safety valve and handles can be done by you by following instructions provided in our cookbooks or on our website. Other repairs must be done only by an Hawkins authorized service centre or representative.

Expert, lifelong free service is available from over 800 Hawkins Authorised Service Centres in India. The list of Service Centres accompanies each pressure cooker shipped in India.

Pressure Cookers exported to other countries carry details of the party to be contacted in case of any requirement of parts or service.



Hawkins

GENUINE PARTS

List of Packaged Parts of the Pressure Cooker

GASKET



| OLD CODE | NEW CODE | PART NAME | APPLICABILITY |
|-----------------------|----------|-----------------|--|
| Hawkins Gasket | | | |
| A00-09 | MG | Mini | 1.5L, XT 2L, SSC 1.5L-2L, MM 2L, MMH 2L |
| BG1* | BG* | Baby | 2L-3L, All Contura 4L, MM 2.5L-3.5L, MMH 3L |
| B25-09 | BGSS | SS Baby | SS 2L-3L Tall, SSC 3L |
| A30-09 | WG | Wide | Classic 3L Wide, MM 4L |
| B10-09* | SG* | Standard | 3.5L-8L Tall (except as above) SS 3L-7L, SSC 3.5L-5L |
| D10-09 | IG | Intermediate | 8L Wide Body-12L, BB 14L |
| D30-09 | IGSS | SS Intermediate | SS 8L Wide Body & 10L |
| E20-09 | LG | Bigboy | 18L & 22L |

| OLD CODE | NEW CODE | APPLICABILITY |
|----------------------------|----------|------------------------|
| Futura Sealing Ring | | |
| F05-16 | MGF | 2L |
| F40-16 | BGF | 3L |
| F10-16 | SGF | 3.5L-7L, FSS 4L & 5.5L |
| O70-16 | IGF | 7L Jumbo & 9L |

* Gaskets offered in Header Cards:

| | |
|----------------------------|----------|
| Header Card for BG: | |
| Code: | BG24 |
| Configuration: | 24 units |
| Header Card for SG: | |
| Code: | SG24 |
| Configuration: | 24 units |

VENT WEIGHT / PRESSURE REGULATOR



| OLD CODE | NEW CODE | APPLICABILITY |
|---|----------|---|
| Hawkins Vent Weight/Pressure Regulator | | |
| B10-20 | VW75 | 1.5L-12L v.'75/'95, SS, SSC, BB. Use with B10-18, B11-18, D10-18 |
| H10-20 | VW05 | 1.5L-12L v.'05/'13, New MM 2021 Use with H10-18, H80-18 |
| Futura Pressure Regulator | | |
| F10-14 | VWF | All Futura |

SAFETY VALVE



| OLD CODE | NEW CODE | APPLICABILITY |
|-----------------------------|----------|---------------------------|
| Hawkins Safety Valve | | |
| SV1 | SV* | 1.5L-14L (All Hawkins) |
| E20-10 | SVBB | Bigboy 18L & 22L |
| Futura Safety Valve | | |
| F10-12 | SVF | HA 2L-9L |
| F50-12 | SVFSS | SS 4L & 5.5L |

*SV offered in Header Card: Code: SV25 Configuration: 25 units

VENT TUBE / STEAM VENT



| OLD CODE | NEW CODE | APPLICABILITY |
|--|----------|---|
| Hawkins Vent Tube with Nut & Washer | | |
| B10-18 | VT75 | 2L-8L Tall v.1975. Use with B10-20 |
| B11-18 | VT95 | 1.5L-8L Tall v.1995. Use with B10-20 |
| H10-18 | VT13 | 1.5L-8L Tall, All Contura v.'05/'13 (excluding SSC). Use with H10-20 |
| D10-18 | VT175 | 8L Wide Body-12L v.'75/'95, BB. Use with B10-20 |
| H80-18 | VT113 | 8L Wide -12L v.'05/'13. Use with H10-20 |
| Futura Steam Vent with Nut & Washer | | |
| F12-13 | VTF | Futura HA 2L-9L |
| F50-13 | VTFSS | SSF 4L & 5.5L |

SUBSIDIARY BODY HANDLE



| OLD CODE | NEW CODE | APPLICABILITY |
|--|----------|--|
| Hawkins Sub. Body Handle with Screw | | |
| B15-05* | SBH75 | 4L-12 L v.1975 |
| B19-05* | SBH05 | 3.5L-12 L v.'95/'05 (excluding Contura) |
| M19-05 | SBHC5 | All Contura 3.5L-6.5L |
| E02-05 | SBHBB14 | Bigboy 14L |
| P65-05 | SBHSS13 | 4L-8L with screw (use with Nut of SNSS) |
| B39-05 | SBHSS95 | 4L-10L with screw & nut v.1995 |
| Futura Short Body Handle with Screw & Nut | | |
| F57-04 | SBHFSS4 | SSF 4L |
| F59-04 | SBHF | 4L-9L & SSF 5.5L |

*Now with screw. B15-05/B19-05 replace B10-05/B11-05 respectively. For Thane v.2013 cookers, use P65-05 (poly pouch part), not B19-05.

BODY HANDLE



| OLD CODE | NEW CODE | APPLICABILITY | OLD CODE | NEW CODE | APPLICABILITY |
|--|----------|--------------------|---|----------|------------------------------|
| Hawkins Body Handle With 2 Studs & 2 Screws | | | Futura Long Body Handle With Screw & Washer (& Nut#) | | |
| B15-01* | BH75 | 2L-12L v.1975 | F09-01 | BHF2 | 2L |
| B19-01* | BH95 | 1.5L-12L v.'95/'05 | F49-01 | BHF3 | 3L |
| B21-01 | BH13 | 1.5L-12 L v.2013 | F39-01 | BHF4 | 3.5L-4L |
| E01-01 | BHBB14 | Bigboy 14L v.2013 | F57-01 | BHFSS4 | SSF 4L# |
| E29-01 | BHBB22 | Bigboy 18L & 22L | F19-01 | BHF94 | 5L-7L v.'84/'94# |
| MMBH1 | BHMM | MM 1.5L-8.5L | F59-01 | BHFSTD | 5L-7L v. 2005 & SSF 5.5L# |
| | | | O79-01 | BHFJ | 7L Jumbo-9L# |

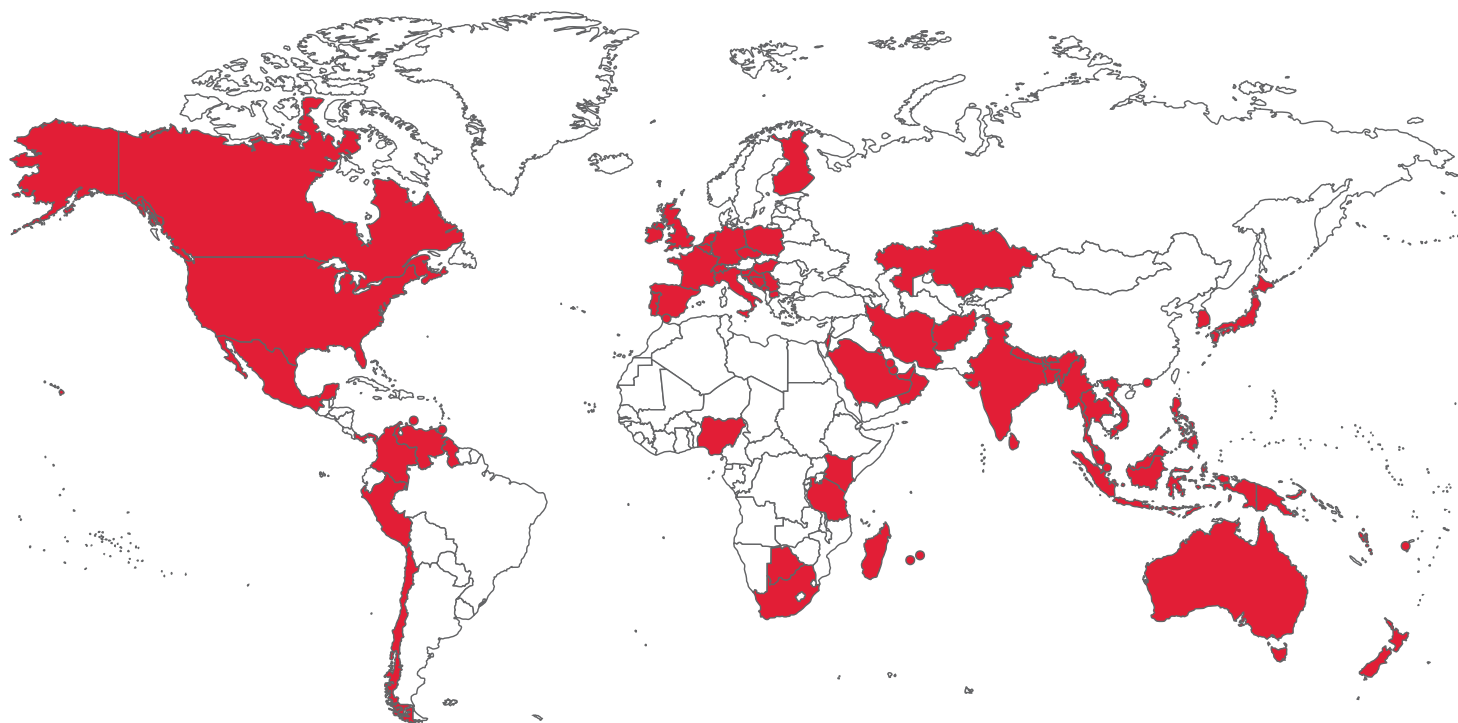
* Now with studs & screws. B15-01/B19-01 replace B10-01/B11-01 respectively

LID HANDLE WITH RIVETS



| OLD CODE | NEW CODE | APPLICABILITY |
|---------------------------------------|----------|------------------------|
| Hawkins Lid Handle with Rivets | | |
| B21-13 | LPH | 1.5L-8L Tall |
| D21-13 | LPHI | 8L Wide Body-12L |
| E30-13 | LPHBB | Bigboy 14L-22L |
| Futura Lid Handle with Screws | | |
| F09-08 | LPHF2 | 2L |
| F49-08 | LPHF3 | 3L |
| F19-08 | LPHFS | 3.5L-7L, SSF 4L & 5.5L |
| O79-08 | LPHFJ | 7L Jumbo-9L |

65 Countries in which Our 110 Million Products (Pressure Cookers & Cookware) have been sold.



North America

- Canada
- Panama
- Mexico
- USA

Latin America

- Chile
- Peru
- Colombia
- Trinidad & Tobago
- Curaçao
- Venezuela

Europe

- Belgium
- Czech Republic
- Finland
- France
- Germany
- Gibraltar
- Hungary
- Ireland
- Italy
- Netherlands
- Poland
- Portugal
- Spain
- Switzerland
- United Kingdom
- Yugoslavia

Africa

- Botswana
- Kenya
- Madagascar
- Mauritius
- Nigeria
- Réunion
- South Africa
- Tanzania

Asia

- Afghanistan
- Bahrain
- Bangladesh
- Bhutan
- Burma
- Hong Kong
- India
- Indonesia
- Iran
- Israel
- Japan
- Kazakhstan
- Kuwait
- Malaysia
- Nepal
- Oman
- Philippines
- Qatar
- Saudi Arabia
- Singapore
- South Korea
- Sri Lanka
- Thailand
- UAE
- Vietnam

Pacific

- Australia
- New Zealand
- Papua New Guinea
- Fiji
- Vanuatu



The entire contents of this catalog including designs, photography, text and logos are the property by Hawkins Cookers Limited. The products shown in this catalog are protected by patents and/or design registrations and/or other applicable laws concerning Intellectual Property Rights in India and in various other countries. All Product Specifications are correct as on June 1, 2023 and are subject to change without notice. Any unauthorised use of the aforesaid Intellectual Property Rights is a violation of law and may invite appropriate civil and criminal action.

Hawkins Cookers Limited is the proprietor of the Hawkins, Futura and Miss Mary Registered Trademarks in India and in many other countries throughout the world. © 2023 and all rights reserved.



Hawkins Cookers Limited

www.hawkinscookers.com

Corporate Identity Number: L28997MH1959PLC011304

FOR ENQUIRIES CONTACT:

Hawkins Marketing Department
New Udyog Mandir 2, Pitamber Lane
Mahim, Mumbai 400 016
Maharashtra, India

Tel: +91 (22) 2444 0807; Fax: +91 (22) 2444 9152

Email: conserve@hawkinscookers.com